

Copper Products

Belden Smart Naming Scheme - Copper



Copper Cable



**Copper Patch Cord
& Pigtail**

Copper Cable

Belden Smart Naming Scheme - Copper

- Cable Stocking Code: PN + Color Code + Package Code

10GX12 **006** **1000**
└───┬───┘ └──┬──┘ └──┬──┘
P/N **Color** **Reel**
 Code **Length**

10GX12 = 10GX serial CAT6A non-bonded pair, 4-pair, 23AWG, CMR, unshielded cable
006 = blue, 008 = gray etc.
1000 = 1kft /reel, or 305M /reel, can provide other lengths upon request

Commonly Used Color Code

Code	001	002	003	004	005	006	007	008	009	010
Color	BRN	RED	ORG	YEL	GRNDK	BLULT	VIO	GRY	WHT	BLK

Copper Patch Cord

Belden Smart Naming Scheme - Copper

Performance	Cable	Termination	Standard Color	Length
-------------	-------	-------------	----------------	--------

Patch Cords

UTP & STP

10GX UTP	= CA	LSNH = 24	T568A/B - T568A/B = 1	Red = 02	0.5 m = 0D5M
		PVC = 99		Orange = 03	1.0 m = 001M
				Yellow = 04	2.0 m = 002M
				Green = 05	3.0 m = 003M
				Blue = 06	5.0 m = 005M
				Purple = 07	10.0 m = 010M
				Grey = 08	
				White = 09	
				Black = 00	
CAT5E UTP	= C5P	LSNH = 4	T568C - T568C = 1	Red = 02	2 ft - 65 ft = 002F - 065F
CAT5E STP	= C5C	PVC = 9		Orange = 03	1 m - 20 m = 001M - 020M
CAT6 UTP	= C6P			Yellow = 04	
CAT6 STP	= C6C			Green = 05	
CAT6A STP	= CAC			Blue = 06	
				Purple = 07	
				Grey = 08	
				White = 09	
				Black = 10	

Example:

CA24106003M is: 10GX Patch Cord, 4 pair 26 AWG, Stranded, LSZH, T568A/B-T568A/B, Blue, 3 Mts

Copper Pigtail & Crossover Patch Cord

Belden Smart Naming Scheme - Copper

Pigtails Part Number Example:

C6P4304002M CAT6 Pigtail, Nonbonded-Pair, 4-Pair, 24AWG, LSZH, T568B-Open, Yellow, 2m

Performance		Cable		Termination		Standard Color		Length for 10GX	
10GX	= CA	10GX Bonded-Pair, Solid, CMR	= 21	T568A-Open	= 2	Red	= 02	20 ft (6.1m)	= 020
		10GX Bonded-Pair, Solid, CMP	= 22			Orange	= 03	25 ft (7.6m)	= 025
CAT5E UTP	= C5P	LSNH	= 4	T568B-Open	= 3	Yellow	= 04	35 ft (10.6m)	= 035
CAT5E STP	= C5C	PVC	= 9			Green	= 05	50 ft (15.2m)	= 050
CAT6 UTP	= C6P					Blue	= 06	75 ft (22.9m)	= 075
CAT6 STP	= C6C					Purple	= 07	100 ft (30.5m)	= 100
CAT6A STP	= CAC					Gray	= 08	Length (exclude 10GX)	
						White	= 09	2 ft - 65 ft	= 002F - 065F
						Black	= 00	1 m - 20 m	= 001M - 020M
TIA 606 Color									
						Red	= 12		
						Orange	= 13		
						Yellow	= 14		
						Green	= 15		
						Blue	= 16		
						Purple	= 17		

* TIA 606 Color is only for 10GX series

Crossover Patch Cords Part Number Example:

C501502010 is CAT5E Patch Cord, Bonded-Pair, 4-pair, 24 AWG Solid, CMR, Crossover IEEE, Red, 10 ft (3.0 m)

Performance		Cable		Termination		Standard Color		Length	
10GX	= CA	10GX Bonded-Pair, Solid, CMR	= 21	Crossover T568A-T568B	= 4	Red	= 02	1 ft (0.3 m)	= 001
		10GX Bonded-Pair, Solid, CMP	= 22			Yellow	= 04	2 ft (0.6 m)	= 002
CAT6+	= C6	C6/5 Bonded-Pair, Solid, CMR	= 01	Crossover IEEE	= 5	Purple	= 07	3 ft (0.9 m)	= 003
CAT5E	= C5	C6/5 Bonded-Pair, Solid, CMP	= 02	Rollover	= 6	White	= 09	4 ft (1.2 m)	= 004
						Blue	= 06	5 ft (1.5 m)	= 005
						Black	= 00	6 ft (1.8 m)	= 006
								7 ft (2.1 m)	= 007
								8 ft (2.4 m)	= 008
								9 ft (2.7 m)	= 009
								10 ft (3.0 m)	= 010
								11 ft (3.4 m)	= 011
								12 ft (3.7 m)	= 012
								13 ft (4.0 m)	= 013
								14 ft (4.3 m)	= 014
								15 ft (4.6 m)	= 015
								20 ft (6.1 m)	= 020
								25 ft (7.6 m)	= 025

Fiber Products

Belden Smart Naming Scheme - Fiber



**FiberExpress
MPO Trunk
Assemblies (FM)**



**FiberExpress
Patch Cords (FP)**



**FiberExpress
UHD
Frames (FF) &
Cassettes (FC)**

FX Pigtails

Belden Smart Naming Scheme - Fiber

TF

3

LC

900

P

S01

Fiber Type	
1	OM1
2	OM2
3	OM3
4	OM4
S	OS2

Connectors	
LC	LC Simplex
SC	SC Simplex
ST	ST
FC	FC

Cable Type	
900	Tight Buffer

Product Family	
P	Fusion Pigtails

Packaging	
S01	Single Unit
R12	Rainbow 12 Pk

Examples:

TF4LC900PS01 - FX Field-Termination Pigtails,OM4,LC Simplex,Tight Buffer 900um,open-Ended,2M

TFSSC900PS01 - FX Field-Termination Pigtails,OS2,SC Simplex,Tight Buffer 900um,open-Ended,2M

For future options contact Belden for custom Engineered solutions.

FX Patch Cords

Belden Smart Naming Scheme - Fiber

PF

3

LD

LD

003M

R

3

X

A

Fiber Type	Connector 1		Connector 2	
1 OM1	LD	LC Duplex	LD	LC Duplex
2 OM2	LC	LC Simplex	LC	LC Simplex
3 OM3	SD	SC Duplex	SD	SC Duplex
4 OM4	SC	SC Simplex	SC	SC Simplex
S OS2	ST	ST	ST	ST
X OM3(B1)	FC	FC	FC	FC
Y OM4(B1)	LA	LC/APC Duplex	LA	LC/APC Duplex
Z G657A1/A2	LB	LC/APC Simplex	LB	LC/APC Simplex
	LU	LC Duplex Uni Boot	LU	LC Duplex Uni Boot
	SA	SC/APC Duplex	SA	SC/APC Duplex
	SB	SC/APC Simplex	SB	SC/APC Simplex
	FA	FC/APC	FA	FC/APC
	LH	LC Duplex HD	LH	LC Duplex HD
	UH	LC Uni Boot HD	UH	LC Uni Boot HD

Length*
001M to 300M M -Meters

Fire Rating	
R	Riser
P	Plenum
L	LSZH

Cable Construction	
2	Duplex 2.0 mm
3	Duplex 3.0 mm
4	Simplex 2.0 mm
5	Simplex 3.0 mm
7	Round 3.0 mm

Polarity	
X	A/B (Cross)
S	A/A (Straight)

Jacket Color	
Y	Yellow
O	Orange
A	Aqua
E	Erika V.



Examples:

PFSLDL010ML2XY - LC Duplex to LC Duplex , 10m in length , OS2 Singlemode LSZH (Low Smoke Zero Halogen) 2mm duplex zip cord with A-to-B polarity and a yellow cable jacket

PF4LHLH010MP7XE- LC HD to LC HD ,10m in length,OM4 multi mode Plenum 2 mm round interconnector with type A-to-B polarity and a Erika Violet cable jacket

FX MPO Trunk Assemblies

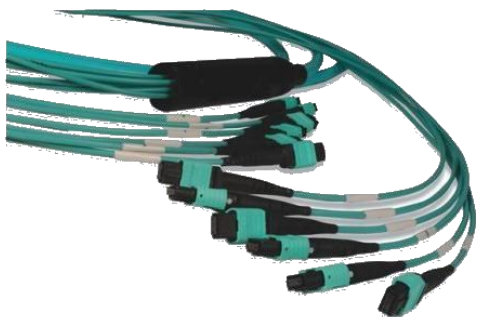
Belden Smart Naming Scheme - Fiber

MF	3	M	M	B	1	003M	R	M	N								
Fiber Type		Connectors		Connector Gender		Polarity (outside)		Connector Count		Length		Fire Rating		Cable Tape		Pulling Eyes	
3	OM3	M	MPO-12	M	Male to Male	A	Type-A	1	12 Fiber	001M to 500M M Meters		R	Riser	M	Mini-D (3.0mm)	N	None
4	OM4	N	MPO-24	F	Female to Female	B	Type-B	2	24 Fiber			P	Plenum	N	Mini-D (4.5mm double jacket)	B	Both ends
S	OS2					C	Type-C					L	LSZH			O	Outside only
X	OM3(B1)											C	CM/PVC			T	Inside only
Y	OM4(B1)																
Z	G67A1/A2																

Examples:

MF4MMA1025MPMO - FX MPO Trunk, OM4, MPO-12(Male to Male), Type-A, 1 MPO(12 fibers), 25m, Plenum, Mini-Distribution (3.0mm sub-Units), Outside pulling eye

MF5MFB1030MLNN - FX MPO Trunk, OS2, MPO-12(Female to Female), Type-B, 1 MPO(12 fibers), 30m, LSZH, Mini-Distribution (4.5mm sub-Units), No pulling eye

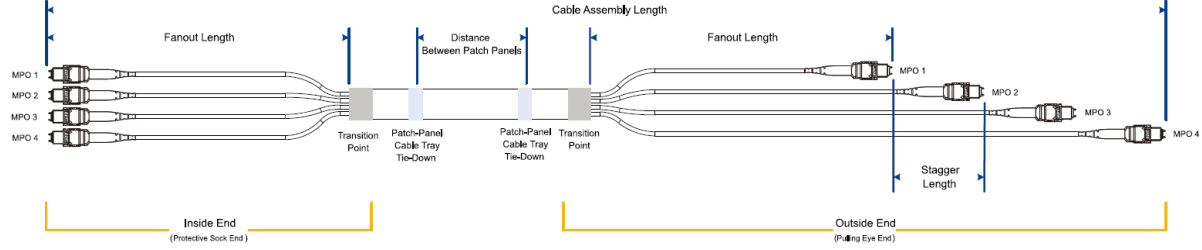


Multi-Fiber Cable Assemblies

Belden Smart Naming Scheme - Fiber

AF **3** **LD** **MM** **04** **D** **2** **030M** **R** **D** **N**

Fiber Type		Connector 1		Connector 2		Fiber Count	Cable Jacket		Fan-Out Geometry		Length	Fire Rating		Fan-Out Geometry		Pulling Eyes		
1	OM1	LD	LC Duplex	LD	LC Duplex	04	4 Fibers	S	Single Jacket	2	2.0mm	001M to 500M M Meters	R	Riser	D	0.5 m x In-Line	N	None
2	OM2	LC	LC Simplex	LC	LC Simplex	06	6 Fibers	D	Double Jacket	3	3.0mm		L	LSZH	E	1.0 m x In-Line	B	Both ends
3	OM3	SD	SC Duplex	SD	SC Duplex	08	8 Fibers			5	Duplex Zip 2.0mm		P	Plenum	F	1.5 m x In-Line	O	Outside only
4	OM4	SC	SC Simplex	SC	SC Simplex	12	12 Fibers			7	Duplex Zip 3.0mm				G	2.0 m x In-Line	T	Inside only
S	OS2	ST	ST	ST	ST	16	16 Fibers			9	900um				1	0.5 m x Stag 80mm/1 conn.		
X	OM3(B1)	FC	FC	FC	FC	24	24 Fibers								2	0.5 m x Stag 80mm/2 conn.		
Y	OM4(B1)	LA	LC/APC Duplex	LA	LC/APC Duplex	32	32 Fibers								3	0.5 m x Stag 80mm/3 conn.		
Z	G657A1/A2	LB	LC/APC Simplex	LB	LC/APC Simplex	36	36 Fibers								4	0.5 m x Stag 80mm/4 conn.		
		LU	LC Duplex Uni Boot	LU	LC Duplex Uni Boot	48	48 Fibers								6	0.5 m x Stag 80mm/6 conn.		
		SA	SC/APC Duplex	SA	SC/APC Duplex	60	60 Fibers											
		SB	SC/APC Simplex	SB	SC/APC Simplex	72	72 Fibers											
		FA	FC/APC	FA	FC/APC													
		LH	LC Duplex HD	LH	LC Duplex HD													
		UH	LC Uni BootHD	UH	LC Uni BootHD													
		MM	MPO-12(M)	MM	MPO-12(M)													
		MF	MPO-12(F)	MF	MPO-12(F)													
		NM	MPO-24(M)	NM	MPO-24(M)													
		NF	MPO-24(F)	NF	MPO-24(F)													
		ZZ	None	ZZ	None													



FX UHD and FX Ultra Cassettes

Belden Smart Naming Scheme - Fiber

FC

3

U

03

LD

MM

A

A

Fiber Type	
1	OM1
3	OM3
4	OM4
S	OS2

Product Family	
H	FX UHD
U	FX Ultra (1" Pull)

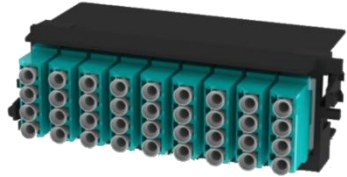
Port Count (Patch Side)	
	03
	06
	12
	18

Connector (Patch Side)	
LD	LC Duplex
LA	LC/APC Duplex
LS	LC Duplex w/Shutters
LQ	LC/APC Duplex w/Shutters
SD	SC Duplex
SC	SC Simplex
SA	SC/APC Duplex
SB	SC/APC Simplex
SS	SC Duplex w/Shutters
SR	SC Simplex w/Shutters
SQ	SC/APC Duplex w/Shutters
SP	SC/APC Simplex w/Shutters
ST	ST

Connector (Trunk Side)	
MM	MPO-12 (m)
MF	MPO-12 (f)

Polarity (Trunk)	
A	Type-A
1	Type-A ALT.

Adapter Color	
K	Beige
N	Black
A	Aqua
E	Erika V.
B	Blue
G	Green



PN: FF3H18LD

FX UHD FRAME, OM3, 18-PORT (36-fiber) LC DUPLEX, AQUA ADAPTERS



PN: FC3H18LDMF

FX UHD CASSETTE, OM3, 18-PORT (36-fiber) LC DUPLEX – MPO-12(f), AQUA ADAPTERS

For further options contact Belden for custom Engineered solutions.

FX UHD and FX Ultra Frames

Belden Smart Naming Scheme - Fiber

FF

3

H

18

LD

A

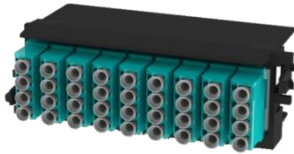
Fiber Type	
1	OM1
3	OM3
4	OM4
S	OS2

Product Family	
H	FX UHD
U	FX Ultra (1" Pull)

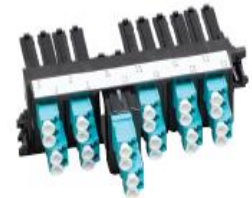
Port Count (Patch Side)
03
06
12
18

Connector (Patch Side)	
LD	LC Duplex
LA	LC/APC Duplex
LS	LC Duplex w/Shutters
LQ	LC/APC Duplex w/Shutters
SD	SC Duplex
SC	SC Simplex
SA	SC/APC Duplex
SB	SC/APC Simplex
SS	SC Duplex w/Shutters
SR	SC Simplex w/Shutters
SQ	SC/APC Duplex w/Shutters
SP	SC/APC Simplex w/Shutters
ST	ST
MP	MPO Up/Down
MR	MPO Up/Up

Adapter Color	
K	Beige
N	Black
A	Aqua
E	Erika V.
B	Blue
G	Green



FF3H18LD, FX UHD Frame, OM3, 18 ports, LC Duplex, Aqua adapters



FF3U12LD, FX Ultra Frame, OM3, 12 ports, LC Duplex, Aqua adapters